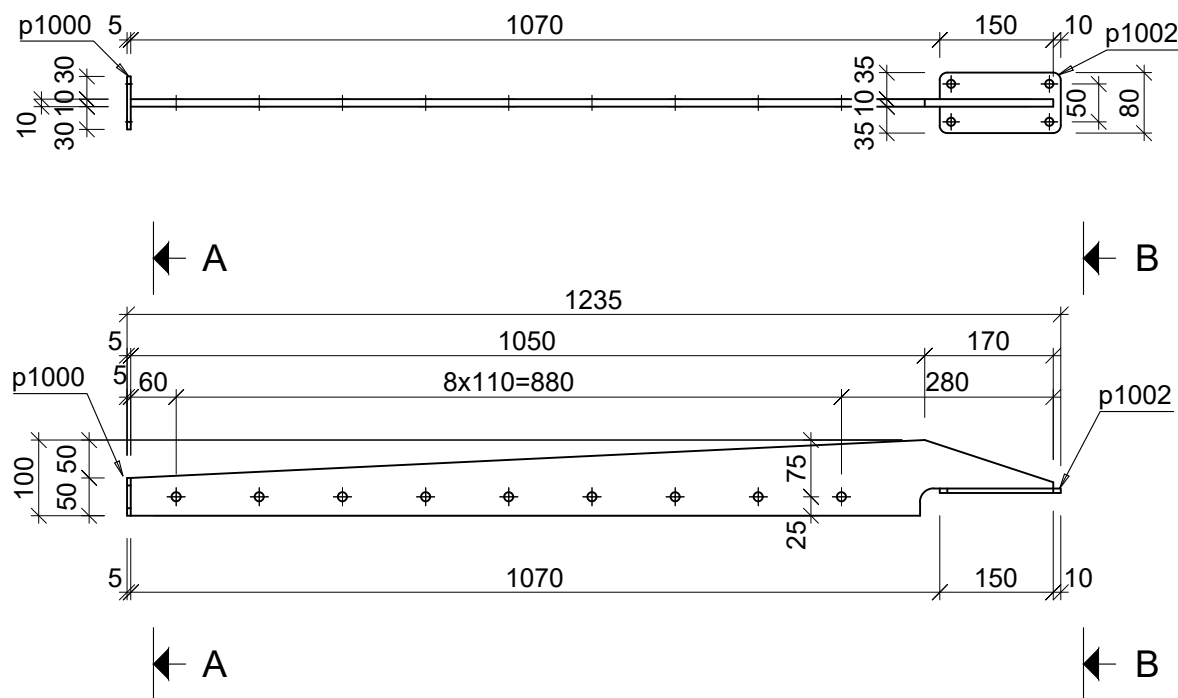
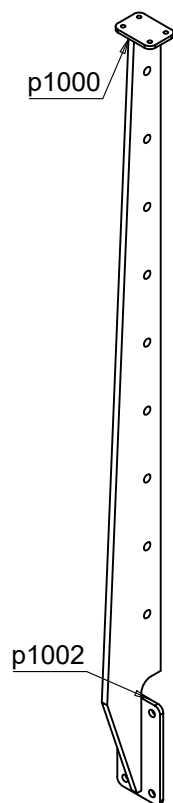


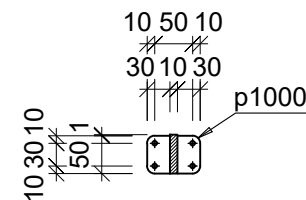
KP-01

S355J2 - 1:10

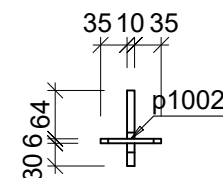
Tähis	Kogus	Profiil	Pikkus	Materjal	Detaili kaal	Kaal kokku
KP-01	50	PL 10x1220x100				
p1001	50	PL 10x1220x100	1220	S355J2	6.9	344.79
p1002	50	PL 6x160x80	160	S355J2	0.6	29.87
p1000	50	PL 5x70x50	70	S355J2	0.13	6.64
ÜHE koostu kaal:					7.63	381.3
Koostude kaal kokku:						381.3



A - A



B - B



KOOSTEJOONIS

Objekt : Emalätte silla rekonstrueerimise ehitusprojekt	Tähis : K1
Nr. : 1938	

Tähis :

Projekt **KP-01**

Mõõtkava: 1:10

Joonestas: Karel Kanarik

Kinnit. :

Märkus :

Kuup. : 01/03/2020

Tellija : Riigimetsa Majandamise Keskus

Material : S355J2

	Muudatus
--	----------

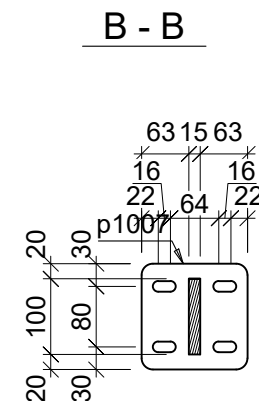
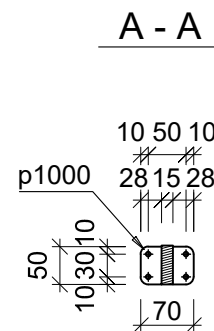
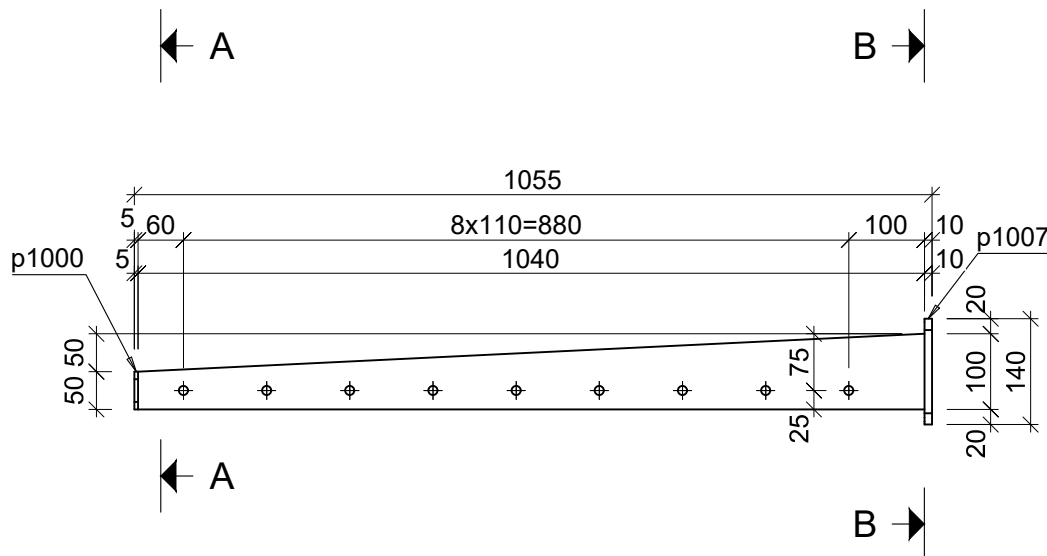
	Nr.
--	-----

Rev0

KP-02

Technical drawing of a vertical rod assembly. The rod is shown in a perspective view, tapering slightly from bottom to top. It has a base plate labeled 'p1007' and a top cap labeled 'p1000'. The rod is marked with 10 cross-sections, each indicated by a small 'x' symbol. The drawing is a black and white line drawing.

Tähis	Kogus	Profiil	Pikkus	Materjal	Detaili kaal	Kaal kokku
KP-02	12	PL 15x1040x100				
p1006	12	PL 15x1040x100	1040	S355J2	9.18	110.21
p1007	12	PL 10x140x140	140	S355J2	1.52	18.26
p1000	12	PL 5x70x50	70	S355J2	0.13	1.59
ÜHE koostu kaal:					10.84	130.07
Koostude kaal kokku:						130.07



Objekt : Emalätte sild
Nr. : 1938

Kinnit. :
Kuup. : 01/03/2020

Märkus :
Tellija : RMK

KP-02

Materjal : S355J2

Mõõtkava: 1:10

Joonestas: Karel Kanarik

	Muudatus
--	----------

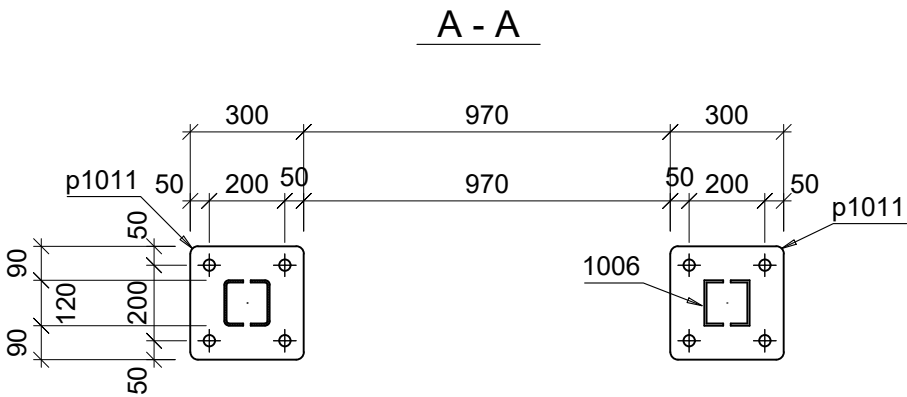
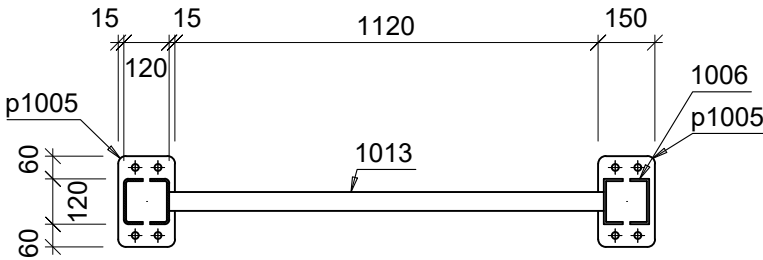
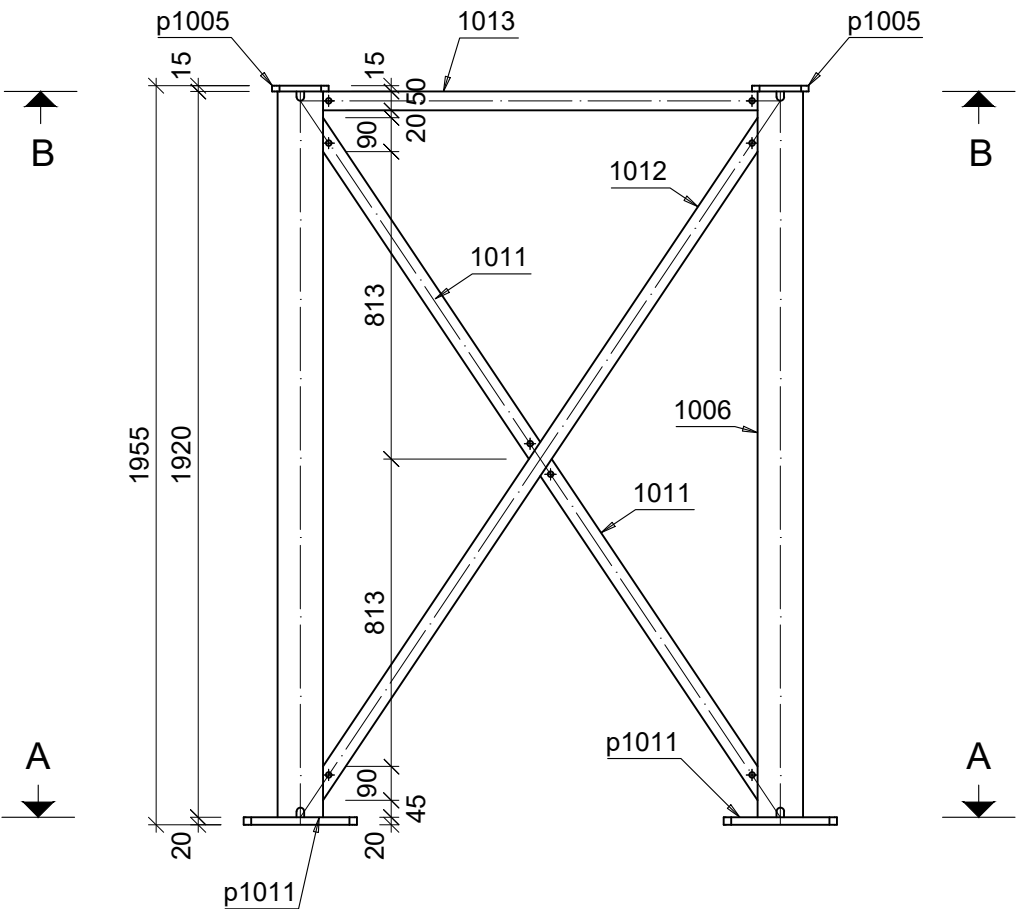
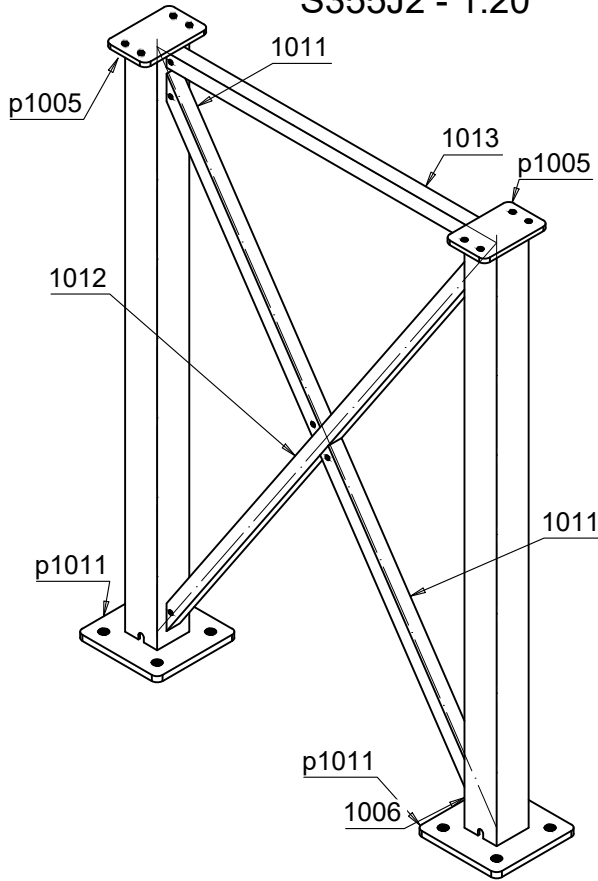
	Nr.
--	-----

Rev0

2x RHS120x6x1920

P-01

S355J2 - 1:20



Tähis	Kogus	Profiil	Pikkus	Materjal	Detaili kaal	Kaal kokku
P-01	2	RHS120x6				
1006	4	RHS120x6	1920	S355J2	39.74	158.98
p1011	4	PL 20x300x300	300	S355J2	14.07	56.28
1012	2	RHS50x4	2140	S355J2	11.66	23.33
1013	2	RHS50x4	1150	S355J2	6.27	12.53
1011	4	RHS50x4	1053	S355J2	5.74	22.96
p1005	4	PL 15x240x150	240	S355J2	4.19	16.78
ÜHE koostu kaal:					145.43	290.87
Koostude kaal kokku:						290.87



KOOSTEJONIS

Objekt : Emalätte silla rekonstrueerimise ehitusprojekt
Nr. : 1938

Tähis : P-01

Möötkava: 1:20
Joonestas: Karel Kanarik

Kinnit. :
Kuup. : 01/03/2020

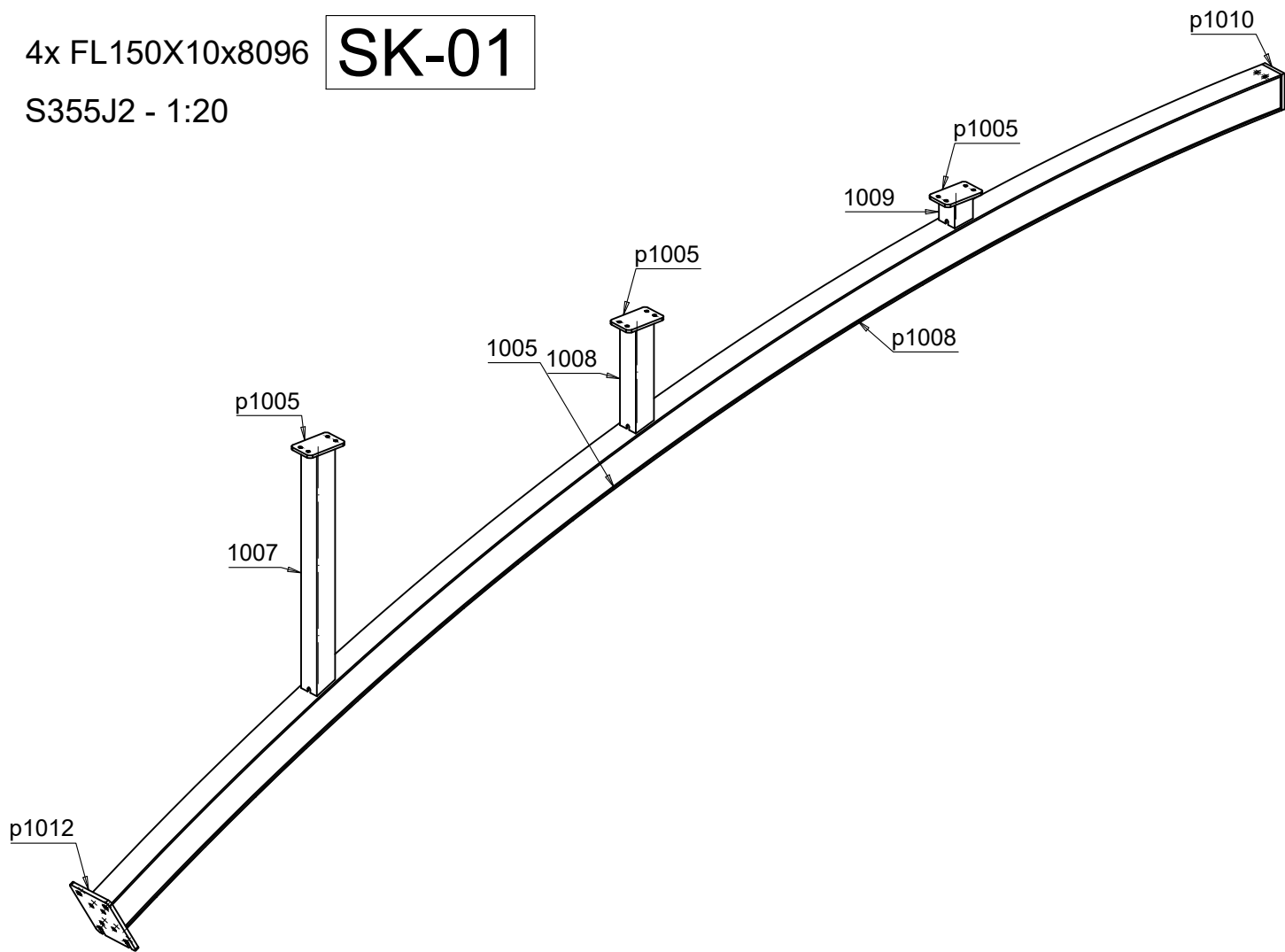
Märkus :
Tellija : Riigimetsa Majandamise Keskus

Materjal : S355J2

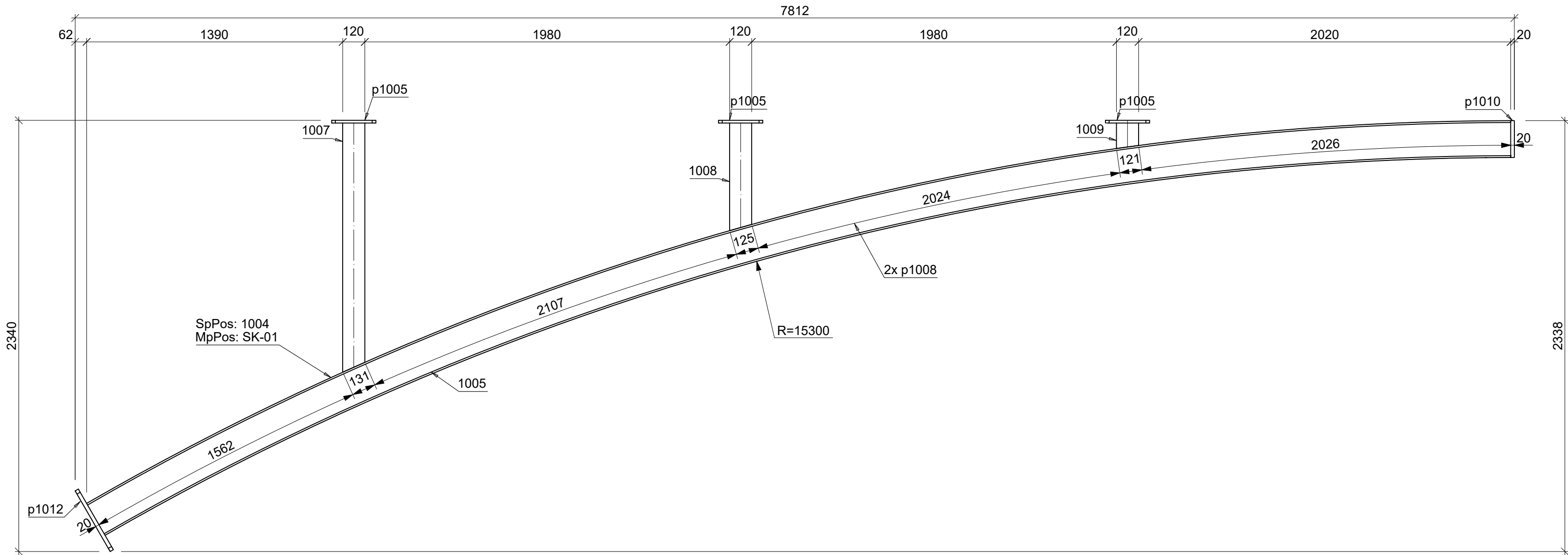
Muudatus :
Nr. :
Rev0

4x FL150X10x8096
S355J2 - 1:20

SK-01



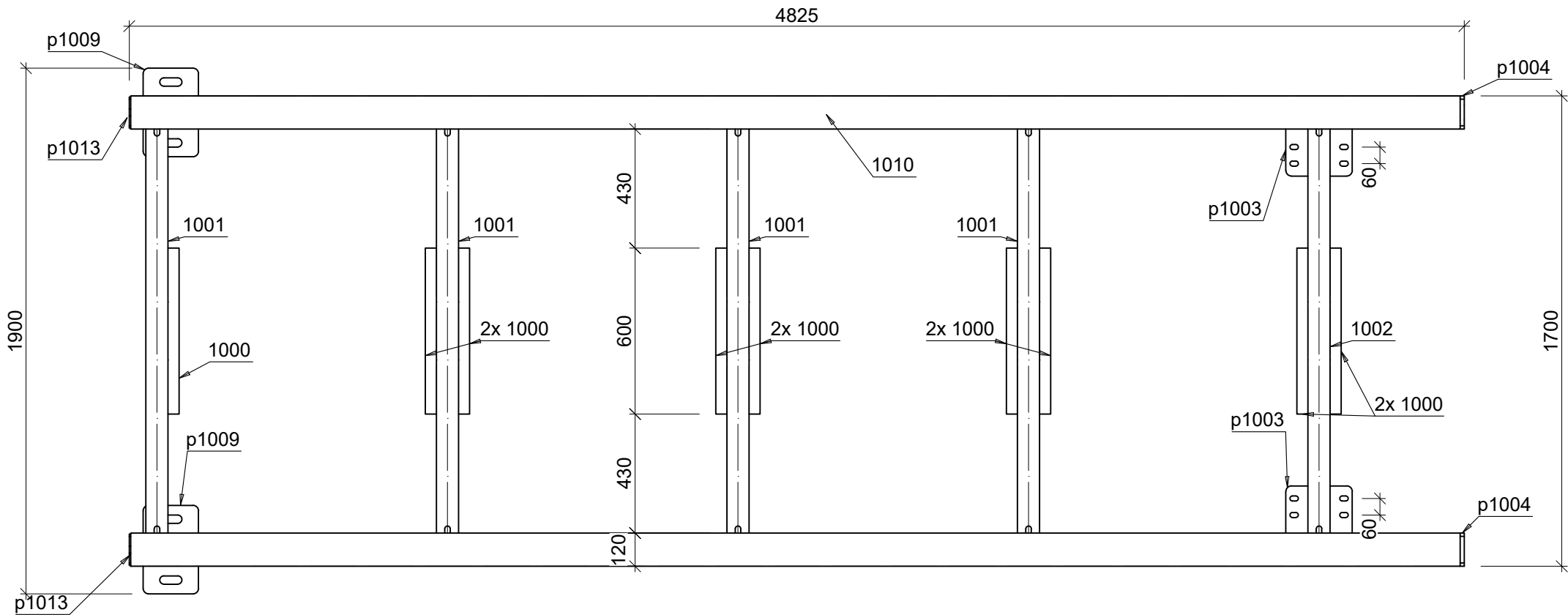
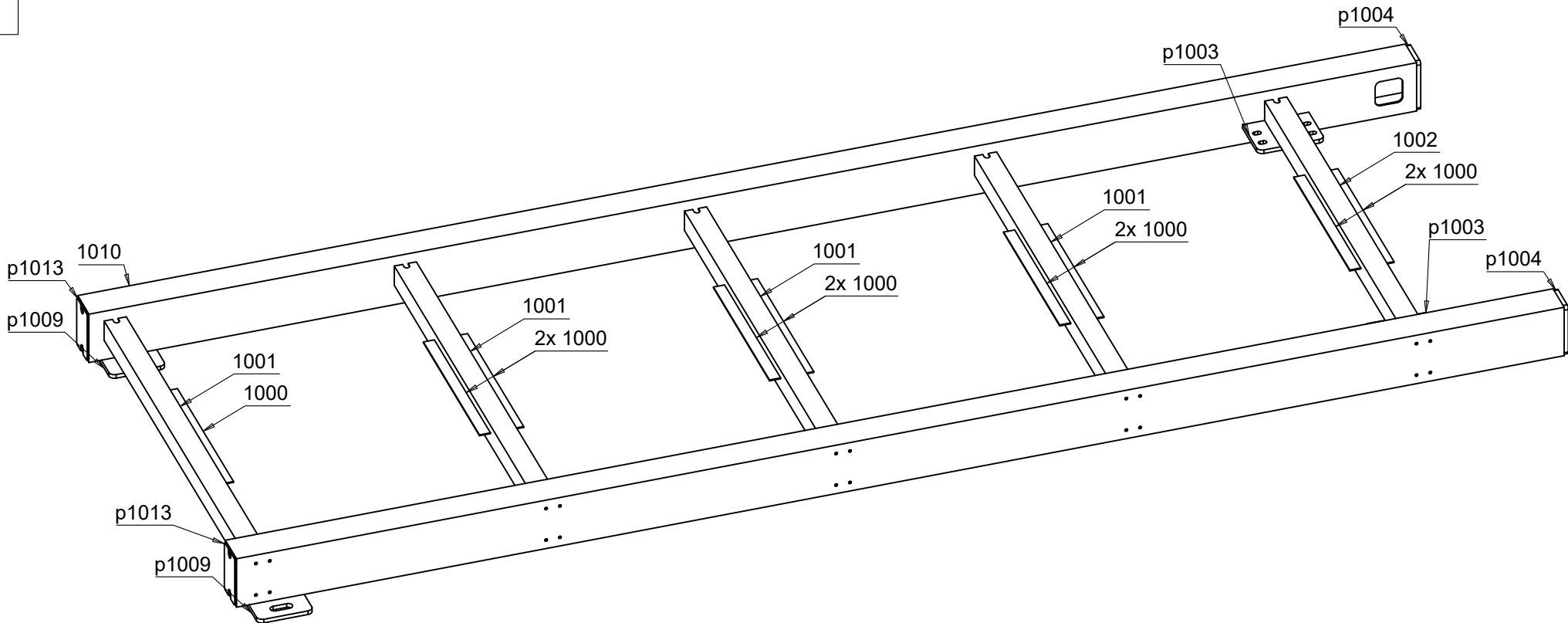
Tähis	Kogus	Profiil	Pikkus	Materjal	Detaili kaal	Kaal kokku
SK-01	4	FL150X10				
p1008	8	PL 5x7998.89x699	7999	S355J2	164.52	1316.14
1004	4	FL150X10	8096	S355J2	95.3	381.19
1005	4	FL150X10	7996	S355J2	94.13	376.5
1007	4	RHS120x6	1352	S355J2	27.98	111.91
p1012	4	PL 20x380x300	380	S355J2	17.84	71.36
1008	4	RHS120x6	584	S355J2	12.08	48.32
p1010	4	PL 20x200x150	200	S355J2	4.71	18.84
p1005	12	PL 15x240x150	240	S355J2	4.19	50.34
1009	4	RHS120x6	138	S355J2	2.85	11.42
ÜHE koostu kaal:					596.5	2386.01
Koostude kaal kokku:						2386.01



KOOSTEJOONIS					
Objekt : Emalätte sild Nr. 1938			Tähis : SK-01	Möötkava: 1:20,1:33 1/3 Joonestas: Karel Kanarik	
Kinnit. :	Märkus :		Materjal : S355J2	Muudatus	Nr.
Kuup. : 01/03/2020	Tellija : RMK				Rev0

2x RHS200x120x6x4805
S355J2 - 1:20

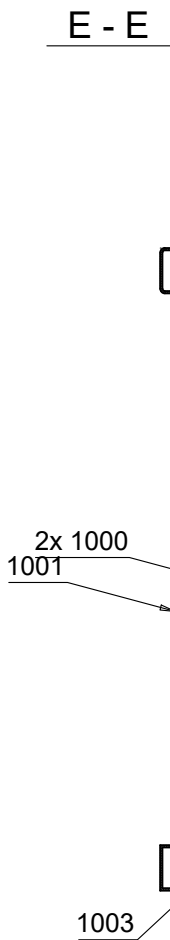
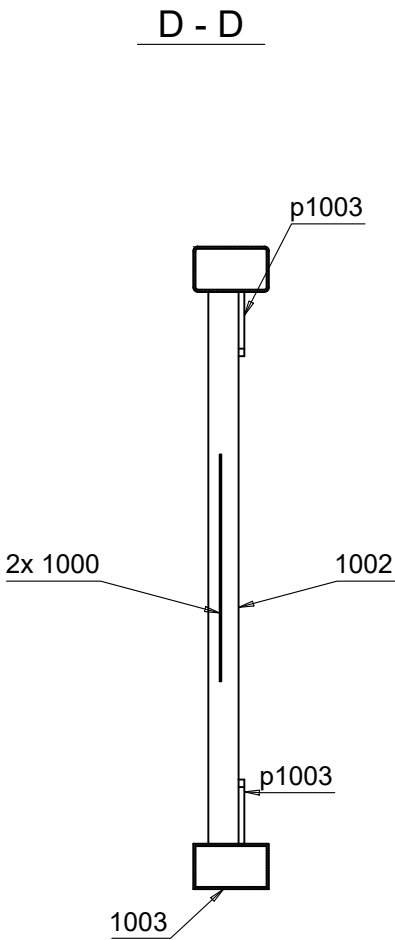
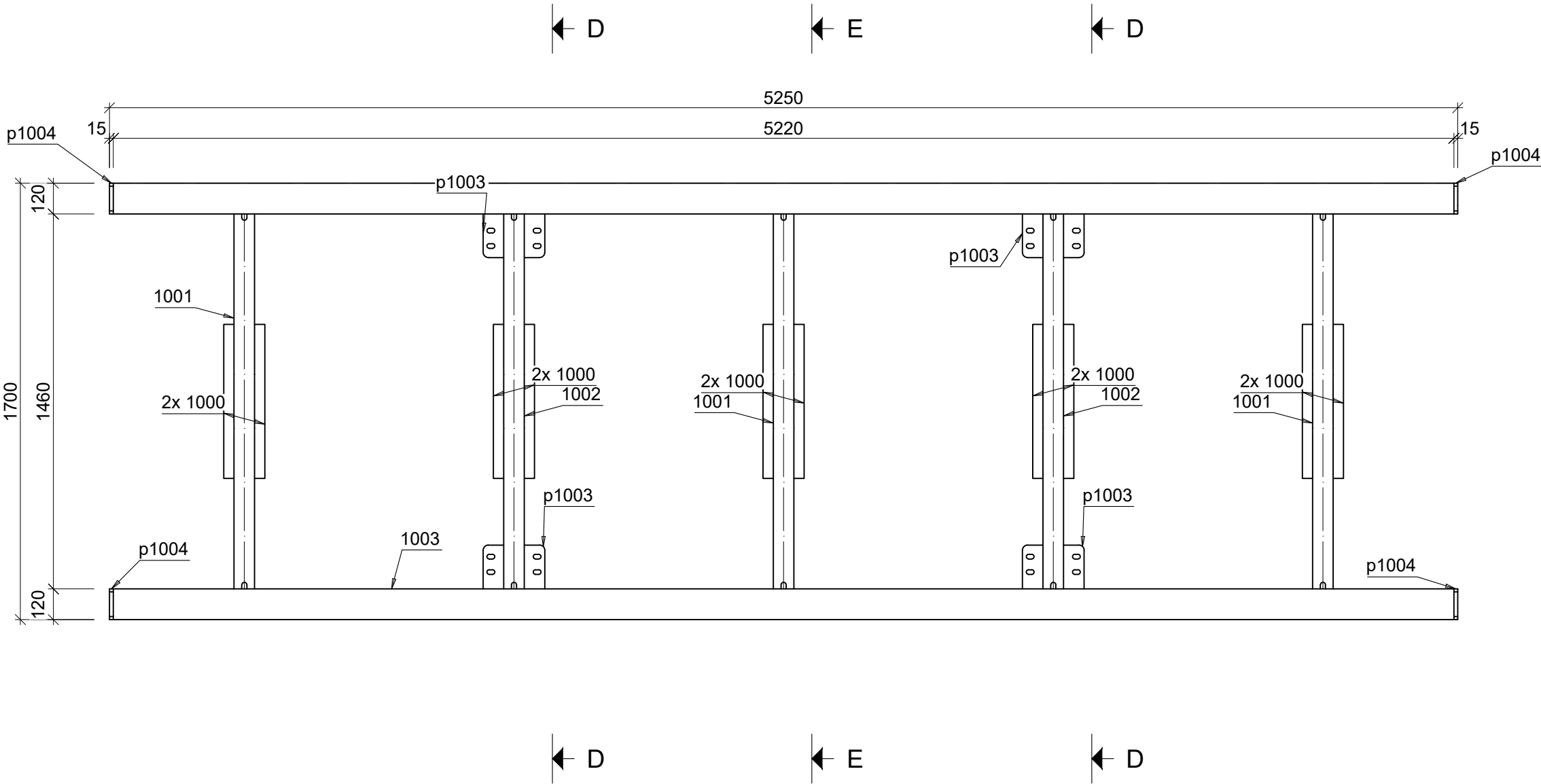
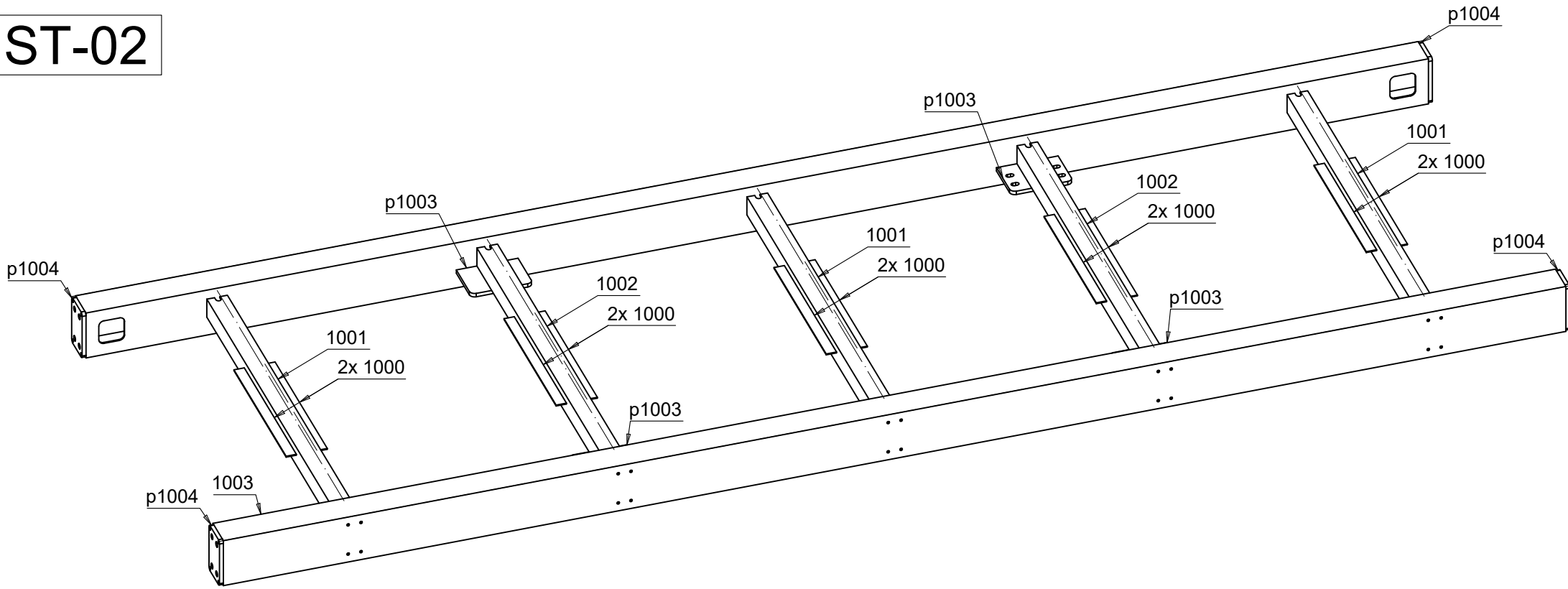
ST-01



Tähis	Kogus	Profiil	Pikkus	Materjal	Detaili kaal	Kaal kokku
ST-01	2	RHS200x120x6				
1010	4	RHS200x120x6	4805	S355J2	135.98	543.93
1002	2	RHS80x6	1460	S355J2	19.27	38.54
1001	8	RHS80x4	1460	S355J2	13.46	107.69
p1009	4	PL 15x320x200	320	S355J2	7.49	29.97
p1003	4	PL 15x240x170	240	S355J2	4.78	19.13
p1004	4	PL 15x200x120	200	S355J2	2.81	11.22
p1013	4	PL 5x192x112	192	S355J2	0.84	3.36
1000	18	FL40X4	600	S355J2	0.75	13.56
ÜHE koostu kaal:					383.7	767.41
Koostude kaal kokku:						767.41

2x RHS200x120x6x5220
S355J2 - 1:20

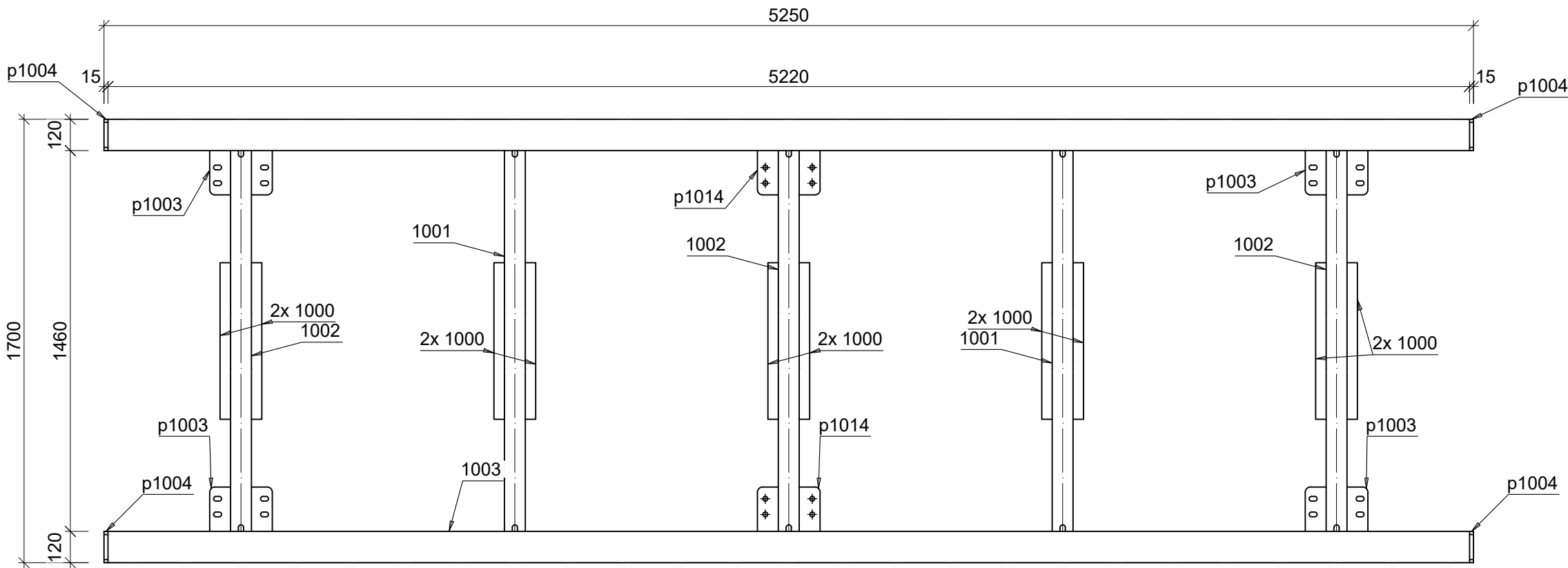
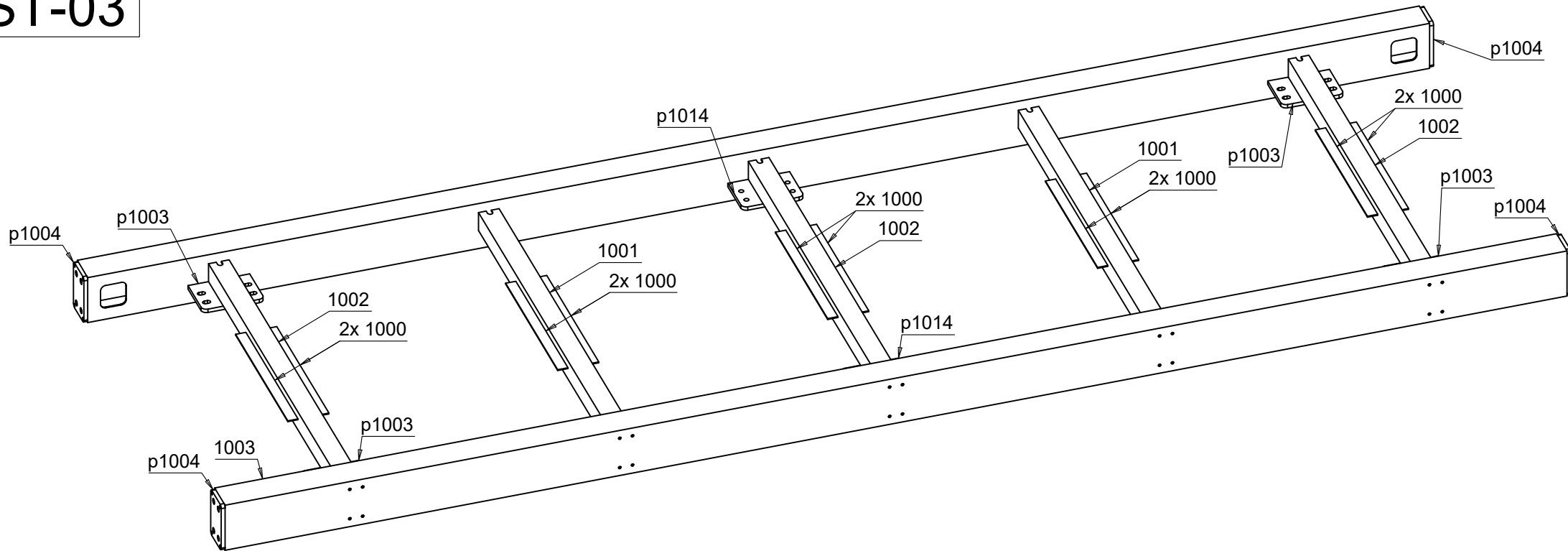
ST-02




Tähis	Kogus	Profiil	Pikkus	Materjal	Detaili kaal	Kaal kokku
ST-02	2	RHS200x120x6				
1003	4	RHS200x120x6	5220	S355J2	147.73	590.9
1002	4	RHS80x6	1460	S355J2	19.27	77.09
1001	6	RHS80x4	1460	S355J2	13.46	80.77
p1003	8	PL 15x240x170	240	S355J2	4.78	38.26
p1004	8	PL 15x200x120	200	S355J2	2.81	22.45
1000	20	FL40X4	600	S355J2	0.75	15.07
ÜHE koostu kaal:					412.27	824.54
Koostude kaal kokku:						824.54

1x RHS200x120x6x5220
S355J2 - 1:20

ST-03



Tähis	Kogus	Profiil	Pikkus	Materjal	Detaili kaal	Kaal kokku
ST-03	1	RHS200x120x6				
1003	2	RHS200x120x6	5220	S355J2	147.73	295.45
1002	3	RHS80x6	1460	S355J2	19.27	57.82
1001	2	RHS80x4	1460	S355J2	13.46	26.92
p1003	4	PL 15x240x170	240	S355J2	4.78	19.13
p1014	2	PL 15x240x170	240	S355J2	4.78	9.56
p1004	4	PL 15x200x120	200	S355J2	2.81	11.22
1000	10	FL40X4	600	S355J2	0.75	7.54
ÜHE koostu kaal:					427.64	427.64
Koostude kaal kokku:						427.64

 <div>Kuubik projekt Kuubik Projekt OÜ EEP001276</div>	KOOSTEJOONIS			
	Objekt : Emalätte sild Nr. 1938		Tähis : ST-03	Möötkava: 1:20 Joonestas: Karel Kanarik
	Kinnit. :	Märkus :	Materjal : S355J2	Muudatus
	Kuup. : 01/03/2020	Tellija : RMK		Nr. Rev0